

CERTIFIED LAND CORNER RECORDATION

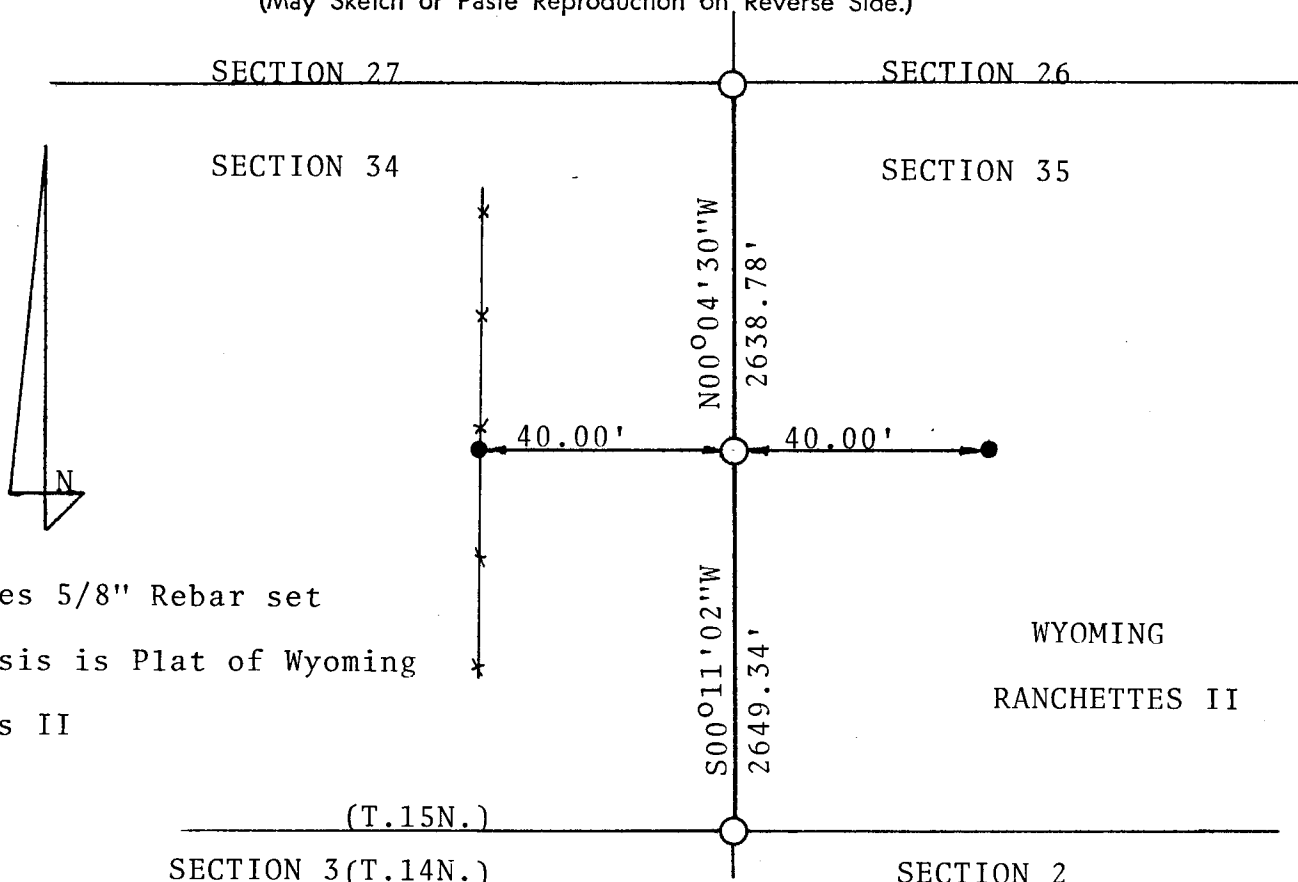
DESCRIPTION OF CORNER EVIDENCE FOUND, AND ORIGINAL RECORD (If known)

34 | 35
 T.15N.R.66W.6th P.M.
 G.L.O. Record-Granite Boulder 15"X10"X6"
 FOUND -Stone Fitting G.L.O. Description

DESCRIPTION OF MONUMENT AND ACCESSORIES ESTABLISHED TO PERPETUATE THE ORIGINAL LOCATION OF THIS CORNER:

At the Corner Set a 2"dia. X 30" long iron pipe with Brass Cap
 Accessories Raised Rock Mound around Monument

SKETCH, WITH COURSE AND DISTANCE TO ADJACENT CORNER IF DETERMINED IN THIS SURVEY.
 (May Sketch or Paste Reproduction on Reverse Side.)



● denotes 5/8" Rebar set
 Bearing Basis is Plat of Wyoming Ranchettes II

WYOMING
 RANCHETTES II

I, William Condrey certify that I have carefully performed or reviewed the work done on the diagrammed corner as reported on this recordation form and approve the same.

William Condrey Wyoming L. S. No. 577
 Signature of Surveyor Registration No.

STATE OF WYOMING,
 Office of Clerk and Recorder,
 County of Saramie

This "corner record" was filed for record on the 20 day of October, 1976, was noted on the cross-index plat and is assigned page No. _____, in book No. _____.

James C. Whitehead
 County Official

Cross Index No. <u>X 17</u>	T. <u>15</u>	R. <u>66</u>	Mer.
_____	T. _____	R. _____	Mer.
_____	T. _____	R. _____	Mer.
_____	T. _____	R. _____	Mer.
_____	T. _____	R. _____	Mer.
_____	T. _____	R. _____	Mer.
_____	T. _____	R. _____	Mer.

The state of Wyoming }
County of Laramie } SS

This instrument was filed for record
at 11 53 o'clock P M. on the
20 day of Oct
A. D. 19 76 and duly recorded in
book..... on page.....

James C. Whitcomb

County Clerk & Ex-Officio Register at Deer's
By..... Deputy